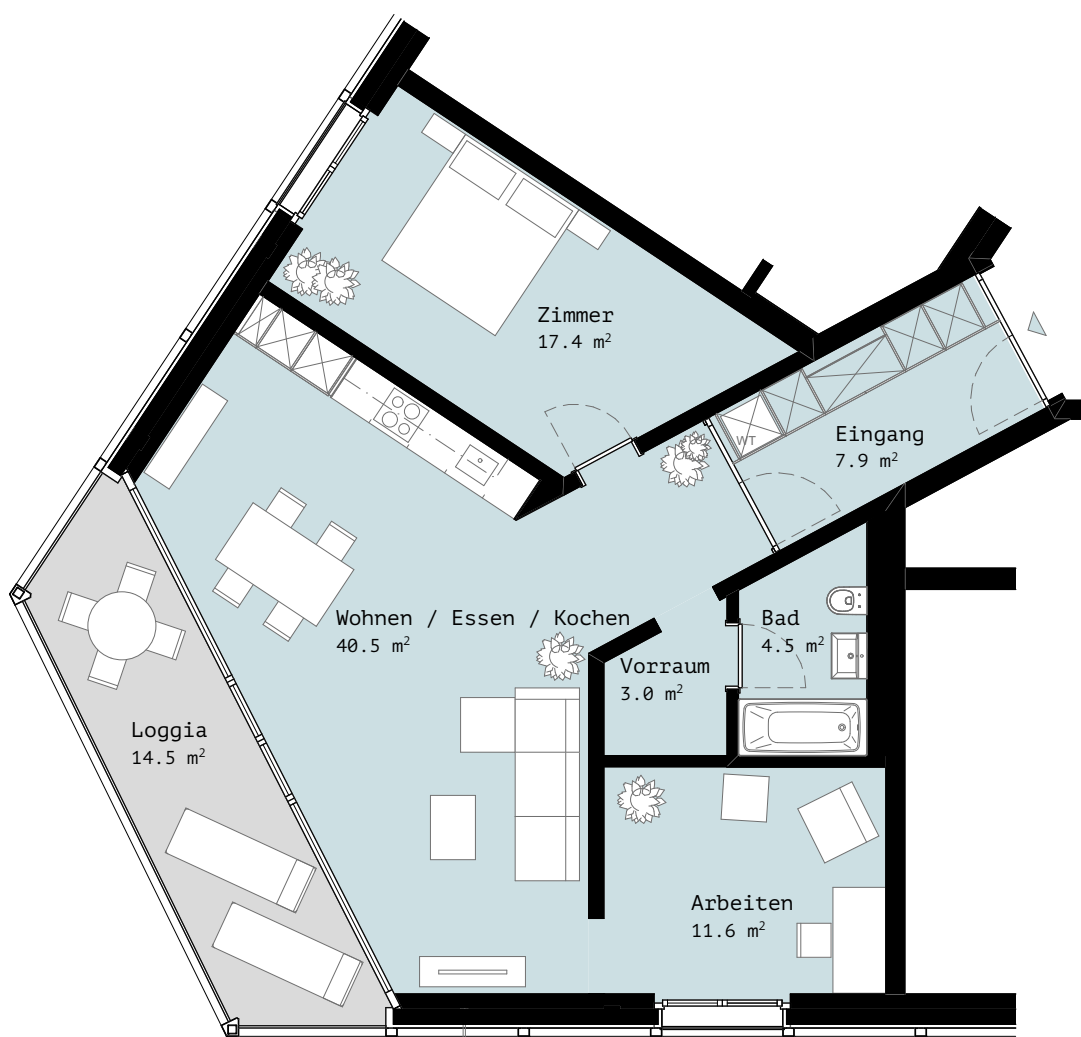
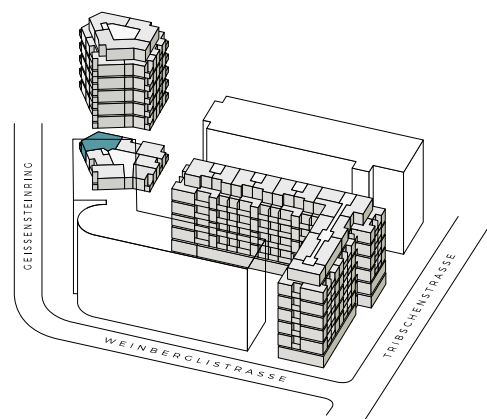


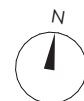
Punkthaus
Geissensteinring 43
6005 Luzern

Wohnungs-Nr. : G43.EG.5
Wohnungsgrösse: 3.5
Geschoss: Erdgeschoss
Wohnfläche: ca. 85.2 m²
Aussenfläche: ca. 14.5 m²



Intercity Vermarktung AG
Intercityhaus
Alpenstrasse 6
6004 Luzern
Tel.+41 418 45 67
info@tribsche.ch
www.tribsche.ch

Intercity
Vermarktung



1:100 